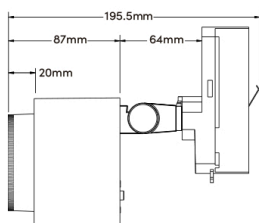
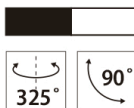




Black / White



FEATURES

- Power-selectable.
- Hassle-free maintenance with modular design.
- Interchangeable and functional lens available.
- Visual-comfort accessories available.
- 7-year guarantee.

Technical Data

Input Voltage/Hz	AC220-240V 50/60Hz
Output Voltage/Current	DC36V/490mA(20W) DC36V/370mA(15W)
Power	20W 15W
Rated Input Current	0.083A(20W) 0.063A(15W)
THD	<15%
PF value	>0.9
Ingress Protection	IP20
Operating Temperature	-10—40°C
Dimmability	DALI
L70/B50 at 25°C	>587000H
L90/B10 at 25°C	>125000H

Packaging

Box Dimensions	L190 x W105 x H170 x T2mm
Box Net Weight	0.75Kg
Box Gross Weight	0.86Kg
Carton Dimensions	L545 x W395 x H360 mm/20 PCS
Carton Net Weight	15Kg
Carton Gross Weight	18.5Kg

LED and Optical Data

LED Brand	Bridgelux COB LED
CRI	>90
SDCM	<6
Beam Angle	15°/24°/36°/60°
Colour temperatures	1800K-3000K
System luminous efficacy up to	79lm/W

Accessories

	GTS-BD01	Barn door
	GTS-ST01	45° Snoot
	HC05	Honeycomb
	GTS-OL01	Linear spread lens
	GTS-TWW01	Wallwash lens



CCT		Power	Beam Angle	Lumen	Efficacy	Power	Beam Angle	Lumen	Efficacy
3000K	CRI 90+	15W	15°	1101lm	76lm/W	20W	15°	1505lm	76lm/W
			24°	1082lm	75lm/W		24°	1456lm	74lm/W
			36°	1061lm	74lm/W		36°	1422lm	72lm/W
			60°	1145lm	79lm/W		60°	1532lm	78lm/W

ECLIPSE CONSEIL

Siège : +33 (1) 79 30 48 19- Showroom Paris : +33 (1) 78 95 50 14 - Mob : +33 (6) 87 82 12 04
Siège social : 7 rue Prudent Neel 92500 Rueil-Malmaison - Showroom : 1 rue Dulong 75017 PARIS