

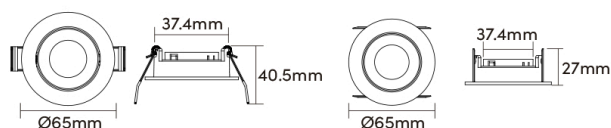


FEATURES

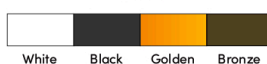
- Compact design with die-casting zic.
- IP20.
- Suitable for standard LED MR11 engines, modules and bulbs.
- Honeycomb optional.
- 5-year guarantee.

Packaging


| | |
|---------------------|------------------------------|
| Box Dimensions | L74 x W69 x H40mm |
| Box Net Weight | 0.092Kg |
| Box Gross Weight | 0.120Kg |
| Carton Dimensions | L382 x W357 x H104 mm/50 PCS |
| Carton Net Weight | 4.6Kg |
| Carton Gross Weight | 6.5Kg |

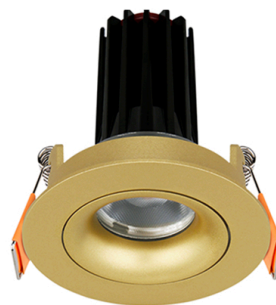


Finish



Accessories

| | | |
|---|------|-----------|
|  | HC03 | Honeycomb |
|---|------|-----------|



ECLIPSE CONSEIL

Siège : +33 (1) 79 30 48 19- Showroom Paris : +33 (1) 78 95 50 14 - Mob : +33 (6) 87 82 12 04
Siège social : 7 rue Prudent Neel 92500 Rueil-Malmaison - Showroom : 1 rue Dulong 75017 PARIS