

OPTICAL SERIES

► SL1506F11



PROFILE COLORS



Installation: Surface Mounted
 Length Available: 1-3m
 Profile Color: Silver, Black Anodized, White Powder Coating
 Lens: Clear Optical Lens
 Input Cable: Endcaps, Profile Bottom, Profile Sides
 Quick Female/Male Connectors Input cable & Junction Box available

OPTICAL SERIES

► SL1506F11

ORDERING CODE

LUMINAIRE	FINISH	LENS	VoL	Power	Ra	CRI	INSTALL ACCS.	IP GRADE	CONTROL OPTOINS
SL1506F11	W White	D Diffuser	12 12VDC	14.40W/m	90 90+	22-2200K , 24-2400K , 25-2500K 27-2700K , 30-3000K , 35-3500K 40-4000K , 50-5000K , 65-6500K	01 - Black&Red 22AWG	A - AMP male/female	E - Through Endcaps
			24 24VDC	7.68W/m					
	B Black	O Opal	24 24VDC	5.04W/m	95 95+	22-2200K , 25-2500K , 27-2700K 30-3000K , 35-3500K , 40-4000K 50-5000K , 65-6500K	02 - Black&White 22AWG	M - Molex male/female	B - Through profile end bottom
			36 36VDC	2.40W/m					
	S Silver	C Clear	48 48VDC	5.76W/m	TW	Tunable White - check your executive sales	03 - White PU protected 2 pin	D - DC male/female	S - Through profile side
				11.52W/m					
				24.00W/m	D2W	Dim To Warm - check your executive sales	04 - 3Pin cable for Tunable white		
				28.80W/m					
				5.18W/m					
				6.00W/m					
			21.60W/m						

RECOMMEND LIGHT SOURCE

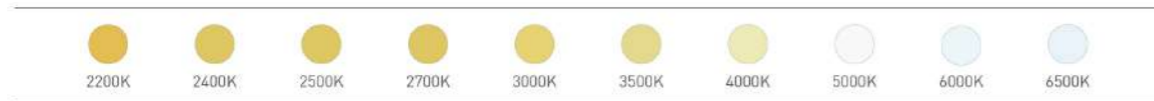
Performance	Part Code	LED QTY	Input Vol.	Power	CRI	Light Source Lumen	Diffuser Lens Lumen	Cutttable length	Max Run	PCB Width
General	FN-2835T-60	60pcs/m	12/24VDC	14.40 W/m	90+	1440 lm/m	1224 lm/m	12V=50mm 24V=100mm	12V=5m 24V=9m	10 mm
					95+	1238 lm/m	1052 lm/m			
High Efficiency	FN-H2835T-64	64pcs/m	24VDC	7.68 W/m	90+	1029 lm/m	875 lm/m	125mm	5m	10 mm
					95+	968 lm/m	823 lm/m			
	FN-H2835O-80	80pcs/m	24VDC	14.40W/m	90+	2275 lm/m	1934 lm/m	100mm	4m	10 mm
					95+	499 lm/m	424 lm/m			
Long Run	LN-2835T-60	60pcs/m	24VDC	5.04 W/m	90+	499 lm/m	424 lm/m	100mm	21m	10mm
					95+	413 lm/m	351 lm/m			
				2.4 W/m	90+	230 lm/m	196 lm/m	100mm	50mm	10 mm
					95+	190 lm/m	162 lm/m			
	LN-2835T-56	56pcs/m	48VDC	5.76 W/m	90+	668 lm/m	568 lm/m	250mm	35mm	10 mm
					95+	553 lm/m	470 lm/m			
Short Cut	FN-F2835A-60	60pcs/m	24VDC	14.4 W/m	90+	1239 lm/m	1003 lm/m	33.3mm	5.5mm	10 mm
					95+	979lm/m	832 lm/m			

OPTICAL SERIES

► SL1506F11

RECOMMEND LIGHT SOURCE

Performance	Part Code	LED QTY	Input Vol.	Power	CRI	Light Source Lumen	Diffuser Lens Lumen	Cuttable length	Max Run	PCB Width
General	FN-H2835T-120	120pcs/m	12/24VDC	14.40 W/m	90+	1512 lm/m	1285 lm/m	12V=50mm 24V=50mm	12V=5m 24V=9m	10 mm
					95+	1282 lm/m	1090 lm/m			
High Efficiency	FN-H2835T-128	128pcs/m	12/24VDC	11.52 W/m	90+	1613 lm/m	1371 lm/m	12V=31.2mm 24V=62.5mm	12V=3m 24V=6m	10 mm
	FN-H28350-160	160pcs/m	24VDC	24 W/m	90+	3480 lm/m	3284 lm/m	50mm	3m	
					95+	1475 lm/m	1254 lm/m			
	FN-H2835T-160	160pcs/m	12/24VDC	14.40 W/m	90+	1987 lm/m	1689 lm/m	12V=25mm 24V=50mm	12V=3m 24V=5mm	10 mm
	95+	1843 lm/m	1567 lm/m							
FN-H28350-192	192pcs/m	24VDC	28.8 W/m	90+	4176 lm/m	3941 lm/m	41.7mm	2.5m	10 mm	
Long Run	LN-H2835T-80	80pcs/m	36VDC	5.18W/m	90+	580 lm/m	493 lm/m	100mm	50mm	10 mm
					95+	482 lm/m	410 lm/m			
	LN-H2835T-112	112pcs/m	48VDC	11.52 W/m	90+	1336 lm/m	1136 lm/m	125mm	25mm	10 mm
					95+	1106 lm/m	940 lm/m			
	LN-H2835T-120	120pcs/m	24VDC	6.00 W/m	90+	588 lm/m	500 lm/m	50mm	21mm	10 mm
					95+	486 lm/m	413 lm/m			
Short Cut	FN-F2835A-120	120pcs/m	24VDC	21.60 W/m	90+	1922 lm/m	1634 lm/m	16.7mm	3.5mm	10 mm
					95+	1595 lm/m	1356 lm/m			



OPTICAL SERIES

► SL1612H10



PROFILE COLORS



Installation: Surface Mounted
 Length Available: 1-3m
 Profile Color: Silver, Black Anodized, White Powder Coating
 Lens: Clear Optical Lens
 Input Cable: Endcaps, Profile Bottom, Profile Sides
 Quick Female/Male Connectors Input cable & Junction Box available

OPTICAL SERIES

► SL1612H10

ORDERING CODE

LUMINAIRE	FINISH	LENS	Vol.	Power	Ra	CRI	INSTALL ACCS.	IP GRADE	CONTROL OPTOINS
SL1612H10	W White	D Diffuser	12 12VDC	14.40W/m	90	22-2200K, 24-2400K, 25-2500K 27-2700K, 30-3000K, 35-3500K 40-4000K, 50-5000K, 65-6500K	01 - Black&Red 22AWG	A - AMP male/female	E - Through Endcaps
			24 24VDC	7.68W/m	90+				
	B Black	O Opal	24 24VDC	5.04W/m	95	22-2200K, 25-2500K, 27-2700K 30-3000K, 35-3500K, 40-4000K 50-5000K, 65-6500K	02 - Black&White 22AWG	M - Molex male/female	B - Through profile end bottom
			36 36VDC	2.40W/m	95+				
	S Silver	C Clear	36 36VDC	5.76W/m	TW	Tunable White - check your executive sales	03 - White PU protected 2 pin	D - DC male/female	S - Through profile side
			48 48VDC	11.52W/m					
				24.00W/m	D2W	Dim To Warm - check your executive sales	04 - 3Pin cable for Tunable white		
				28.80W/m					
				5.18W/m					
				6.00W/m					
			21.60W/m						

RECOMMEND LIGHT SOURCE

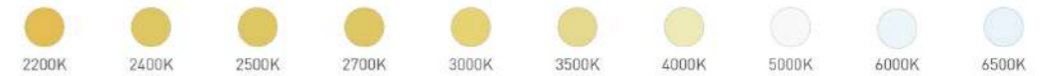
Performance	Part Code	LED QTY	Input Vol.	Power	CRI	Light Source Lumen	Diffuser Lens Lumen	Cutttable Length	Max Run	PCB Width			
General	FN-2835T-60	60pcs/m	12/24VDC	14.40 W/m	90+	1440 lm/m	1224 lm/m	12V=50mm 24V=100mm	12V=5m 24V=9m	10 mm			
					95+	1238 lm/m	1052 lm/m						
High Efficiency	FN-H2835T-64	64pcs/m	24VDC	7.68 W/m	90+	1029 lm/m	875 lm/m	125mm	5m	10 mm			
					95+	968 lm/m	823 lm/m						
Long Run	LN-2835T-60	60pcs/m	24VDC	5.04 W/m	90+	499 lm/m	424 lm/m	100mm	21m	10mm			
					95+	413 lm/m	351 lm/m						
				2.4 W/m	90+	230 lm/m	196 lm/m	100mm	50mm	10 mm			
					95+	190 lm/m	162 lm/m						
				5.76 W/m	LN-2835T-56	56pcs/m	48VDC	90+	668 lm/m	568 lm/m	250mm	35mm	10 mm
								95+	553 lm/m	470 lm/m			
Short Cut	FN-F2835A-60	60pcs/m	24VDC	14.4 W/m	90+	1239 lm/m	1003 lm/m	33.3mm	5.5mm	10 mm			
					95+	979lm/m	832 lm/m						

OPTICAL SERIES

► SL1612H10

RECOMMEND LIGHT SOURCE

Performance	Part Code	LED QTY	Input Vol.	Power	CRI	Light Source Lumen	Diffuser Lens Lumen	Cutttable Length	Max Run	PCB Width	
General	FN-H2835T-120	120pcs/m	12/24VDC	14.40 W/m	90+	1512 lm/m	1285 lm/m	12V=50mm 24V=50mm	12V=5m 24V=9m	10 mm	
					95+	1282 lm/m	1090 lm/m				
High Efficiency	FN-H2835T-128	128pcs/m	12/24VDC	11.52 W/m	90+	1613 lm/m	1371 lm/m	12V=31.2mm 24V=62.5mm	12V=3m 24V=6m	10 mm	
					95+	1475 lm/m	1254 lm/m				
	FN-H28350-160	160pcs/m	24VDC	24 W/m	90+	3480 lm/m	3284 lm/m	50mm	3m	10 mm	
					95+	1987 lm/m	1689 lm/m				
Long Run	FN-H2835T-160	160pcs/m	12/24VDC	14.40 W/m	90+	1987 lm/m	1689 lm/m	12V=25mm 24V=50mm	12V=3mm 24V=5mm	10 mm	
					95+	1843 lm/m	1567 lm/m				
	FN-H28350-192	192pcs/m	24VDC	28.8 W/m	90+	4176 lm/m	3941 lm/m	41.7mm	2.5m	10 mm	
					95+	580 lm/m	493 lm/m				
	Short Run	LN-H2835T-80	80pcs/m	36VDC	5.18W/m	90+	580 lm/m	493 lm/m	100mm	50mm	10 mm
						95+	482 lm/m	410 lm/m			
LN-H2835T-112		112pcs/m	48VDC	11.52 W/m	90+	1336 lm/m	1136 lm/m	125mm	25mm	10 mm	
					95+	1106 lm/m	940 lm/m				
Short Cut	FN-F2835A-120	120pcs/m	24VDC	21.60 W/m	90+	588 lm/m	500 lm/m	50mm	21mm	10 mm	
					95+	486 lm/m	413 lm/m				
Short Cut	FN-F2835A-120	120pcs/m	24VDC	21.60 W/m	90+	1922 lm/m	1634 lm/m	16.7mm	3.5mm	10 mm	
					95+	1595 lm/m	1356 lm/m				



OPTICAL SERIES

► SL1815112



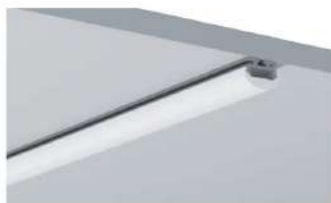
PROFILE COLORS



ACCESSORIES



Rotating Bracket



Installation: Surface Mounted
 Length Available: 1-3m
 Profile Color: Silver, Black Anodized, White Powder Coating
 Lens: Clear Optical Lens
 Input Cable: Endcaps, Profile Bottom, Profile Sides
 Quick Female/Male Connectors Input cable & Junction Box available

OPTICAL SERIES

► SL1815112

ORDERING CODE

LUMINAIRE	FINISH	LENS	VoL	Power	Ra	CRI	INSTALL ACCS.	IP GRADE	CONTROL OPTOINS
SL1815112	W White	D Diffuser	12 12VDC	14.40W/m	90 90+	22-2200K , 24-2400K , 25-2500K 27-2700K , 30-3000K , 35-3500K 40-4000K , 50-5000K , 65-6500K	01 - Black&Red 22AWG 02 - Black&White 22AWG 03 - White PU protected 2 pin 04 - 3Pin cable for Tunable white	A - AMP male/female M - Molex male/female D - DC male/female	E - Through Endcaps B - Through profile end bottom S - Through profile side
			24 24VDC	7.68W/m					
	B Black	O Opal	24 24VDC	5.04W/m	95 95+	22-2200K , 25-2500K , 27-2700K 30-3000K , 35-3500K , 40-4000K 50-5000K , 65-6500K			
			36 36VDC	2.40W/m					
	S Silver	C Clear	48 48VDC	5.76W/m	TW	Tunable White - check your executive sales			
			48 48VDC	11.52W/m					
				24.00W/m	D2W	Dim To Warm - check your executive sales			
				28.80W/m					
				5.18W/m					
				6.00W/m					
			21.60W/m						

RECOMMEND LIGHT SOURCE

Performance	Part Code	LED QTY	Input Vol.	Power	CRI	Light Source Lumen	Diffuser Lens Lumen	Cutttable length	Max Run	PCB Width
General	FN-2835T-60	60pcs/m	12/24VDC	14.40 W/m	90+	1440 lm/m	1224 lm/m	12V=50mm 24V=100mm	12V=5m 24V=9m	10 mm
					95+	1238 lm/m	1052 lm/m			
High Efficiency	FN-H2835T-64	64pcs/m	24VDC	7.68 W/m	90+	1029 lm/m	875 lm/m	125mm	5m	10 mm
					95+	968 lm/m	823 lm/m			
	FN-H2835O-80	80pcs/m	24VDC	14.40W/m	90+	2275 lm/m	1934 lm/m	100mm	4m	10 mm
					95+	499 lm/m	424 lm/m			
Long Run	LN-2835T-60	60pcs/m	24VDC	5.04 W/m	90+	413 lm/m	351 lm/m	100mm	21m	10mm
					95+	230 lm/m	196 lm/m			
				2.4 W/m	90+	190 lm/m	162 lm/m	100mm	50mm	10 mm
					95+	190 lm/m	162 lm/m			
	LN-2835T-56	56pcs/m	48VDC	5.76 W/m	90+	668 lm/m	568 lm/m	250mm	35mm	10 mm
					95+	553 lm/m	470 lm/m			
Short Cut	FN-F2835A-60	60pcs/m	24VDC	14.4 W/m	90+	1239 lm/m	1003 lm/m	33.3mm	5.5mm	10 mm
					95+	979lm/m	832 lm/m			

OPTICAL SERIES

► SL1815I12

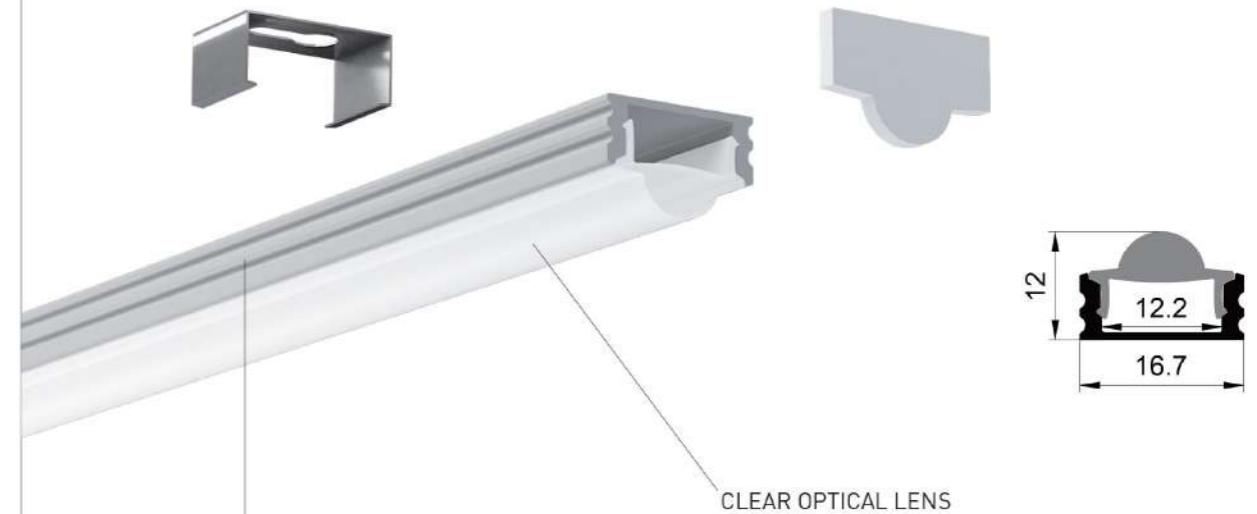
RECOMMEND LIGHT SOURCE

Performance	Part Code	LED QTY	Input Vol.	Power	CRI	Light Source Lumen	Diffuser Lens Lumen	Cuttable length	Max Run	PCB Width
General	FN-H2835T-120	120pcs/m	12/24VDC	14.40 W/m	90+	1512 lm/m	1285 lm/m	12V=50mm 24V=50mm	12V=5m 24V=9m	10 mm
					95+	1282 lm/m	1090 lm/m			
High Efficiency	FN-H2835T-128	128pcs/m	12/24VDC	11.52 W/m	90+	1613 lm/m	1371 lm/m	12V=31.2mm 24V=62.5mm	12V=3m 24V=6m	10 mm
					95+	1475 lm/m	1254 lm/m			
	FN-H2835O-160	160pcs/m	24VDC	24 W/m	90+	3480 lm/m	3284 lm/m	50mm	3m	10 mm
					95+	1987 lm/m	1689 lm/m	12V=25mm 24V=50mm	12V=3mm 24V=5mm	
FN-H2835T-160	160pcs/m	12/24VDC	14.40 W/m	90+	1987 lm/m	1689 lm/m	12V=25mm 24V=50mm	12V=3mm 24V=5mm	10 mm	
				95+	1843 lm/m	1567 lm/m				
FN-H2835O-192	192pcs/m	24VDC	28.8 W/m	90+	4176 lm/m	3941 lm/m	41.7mm	2.5m	10 mm	
				95+	482 lm/m	410 lm/m				
Long Run	LN-H2835T-80	80pcs/m	36VDC	5.18W/m	90+	580 lm/m	493 lm/m	100mm	50mm	10 mm
					95+	482 lm/m	410 lm/m			
	LN-H2835T-112	112pcs/m	48VDC	11.52 W/m	90+	1336 lm/m	1136 lm/m	125mm	25mm	10 mm
					95+	1106 lm/m	940 lm/m			
LN-H2835T-120	120pcs/m	24VDC	6.00 W/m	90+	588 lm/m	500 lm/m	50mm	21mm	10 mm	
				95+	486 lm/m	413 lm/m				
Short Cut	FN-F2835A-120	120pcs/m	24VDC	21.60 W/m	90+	1922 lm/m	1634 lm/m	16.7mm	3.5mm	10 mm
					95+	1595 lm/m	1356 lm/m			



OPTICAL SERIES

► SL1707F12



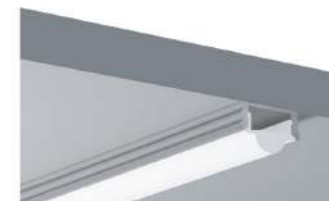
PROFILE COLORS



ACCESSORIES



Rotating Bracket



Installation: Surface Mounted
 Length Available: 1-3m
 Profile Color: Silver, Black Anodized, White Powder Coating
 Lens: Clear Optical Lens
 Input Cable: Endcaps, Profile Bottom, Profile Sides
 Quick Female/Male Connectors Input cable & Junction Box available

OPTICAL SERIES

► SL1707F12

ORDERING CODE

LUMINAIRE	FINISH	LENS	Vol.	Power	Ra	CRI	INSTALL ACCS.	IP GRADE	CONTROL OPTOINS
SL1707F12	W White	D Diffuser	12 12VDC	14.40W/m	90	22-2200K, 24-2400K, 25-2500K 27-2700K, 30-3000K, 35-3500K 40-4000K, 50-5000K, 65-6500K	01 - Black&Red 22AWG	A - AMP male/female	E - Through Endcaps
			24 24VDC	7.68W/m	90+				
	B Black	O Opal	24 24VDC	5.04W/m	95	22-2200K, 25-2500K, 27-2700K 30-3000K, 35-3500K, 40-4000K 50-5000K, 65-6500K	02 - Black&White 22AWG	M - Molex male/female	B - Through profile end bottom
			36 36VDC	2.40W/m	95+				
	S Silver	C Clear	48 48VDC	5.76W/m	TW	Tunable White - check your executive sales	03 - White PU protected 2 pin	D - DC male/female	S - Through profile side
			48 48VDC	11.52W/m					
				24.00W/m	D2W	Dim To Warm - check your executive sales	04 - 3Pin cable for Tunable white		
				28.80W/m					
				5.18W/m					
				6.00W/m					
			21.60W/m						

RECOMMEND LIGHT SOURCE

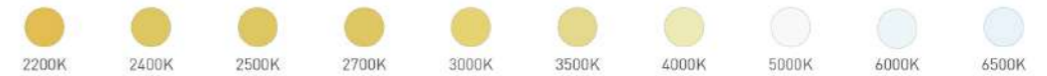
Performance	Part Code	LED QTY	Input Vol.	Power	CRI	Light Source Lumen	Diffuser Lens Lumen	Cutttable Length	Max Run	PCB Width
General	FN-2835T-60	60pcs/m	12/24VDC	14.40 W/m	90+	1440 lm/m	1224 lm/m	12V=50mm 24V=100mm	12V=5m 24V=9m	10 mm
					95+	1238 lm/m	1052 lm/m			
High Efficiency	FN-H2835T-64	64pcs/m	24VDC	7.68 W/m	90+	1029 lm/m	875 lm/m	125mm	5m	10 mm
					95+	968 lm/m	823 lm/m			
	FN-H28350-80	80pcs/m	24VDC	14.40W/m	90+	2275 lm/m	1934 lm/m	100mm	4m	10 mm
					95+	499 lm/m	424 lm/m			
Long Run	LN-2835T-60	60pcs/m	24VDC	5.04 W/m	90+	499 lm/m	424 lm/m	100mm	21m	10mm
					95+	413 lm/m	351 lm/m			
				2.4 W/m	90+	230 lm/m	196 lm/m	100mm	50mm	10 mm
					95+	190 lm/m	162 lm/m			
	LN-2835T-56	56pcs/m	48VDC	5.76 W/m	90+	668 lm/m	568 lm/m	250mm	35mm	10 mm
					95+	553 lm/m	470 lm/m			
Short Cut	FN-F2835A-60	60pcs/m	24VDC	14.4 W/m	90+	1239 lm/m	1003 lm/m	33.3mm	5.5mm	10 mm
					95+	979lm/m	832 lm/m			

OPTICAL SERIES

► SL1707F12

RECOMMEND LIGHT SOURCE

Performance	Part Code	LED QTY	Input Vol.	Power	CRI	Light Source Lumen	Diffuser Lens Lumen	Cutttable Length	Max Run	PCB Width
General	FN-H2835T-120	120pcs/m	12/24VDC	14.40 W/m	90+	1512 lm/m	1285 lm/m	12V=50mm 24V=50mm	12V=5m 24V=9m	10 mm
					95+	1282 lm/m	1090 lm/m			
High Efficiency	FN-H2835T-128	128pcs/m	12/24VDC	11.52 W/m	90+	1613 lm/m	1371 lm/m	12V=31.2mm 24V=62.5mm	12V=3m 24V=6m	10 mm
					95+	1475 lm/m	1254 lm/m			
	FN-H28350-160	160pcs/m	24VDC	24 W/m	90+	3480 lm/m	3284 lm/m	50mm	3m	10 mm
					95+	1987 lm/m	1689 lm/m			
FN-H2835T-160	160pcs/m	12/24VDC	14.40 W/m	90+	1987 lm/m	1689 lm/m	12V=25mm 24V=50mm	12V=3mm 24V=5mm	10 mm	
				95+	1843 lm/m	1567 lm/m				
FN-H28350-192	192pcs/m	24VDC	28.8 W/m	90+	4176 lm/m	3941 lm/m	41.7mm	2.5m	10 mm	
				95+	482 lm/m	410 lm/m				
Long Run	LN-H2835T-80	80pcs/m	36VDC	5.18W/m	90+	580 lm/m	493 lm/m	100mm	50mm	10 mm
					95+	482 lm/m	410 lm/m			
	LN-H2835T-112	112pcs/m	48VDC	11.52 W/m	90+	1336 lm/m	1136 lm/m	125mm	25mm	10 mm
					95+	1106 lm/m	940 lm/m			
LN-H2835T-120	120pcs/m	24VDC	6.00 W/m	90+	588 lm/m	500 lm/m	50mm	21mm	10 mm	
				95+	486 lm/m	413 lm/m				
Short Cut	FN-F2835A-120	120pcs/m	24VDC	21.60 W/m	90+	1922 lm/m	1634 lm/m	16.7mm	3.5mm	10 mm
					95+	1595 lm/m	1356 lm/m			



OPTICAL SERIES

► SL1707E12



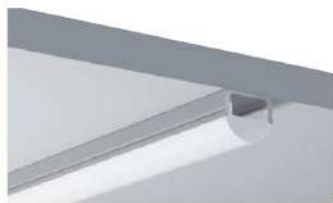
PROFILE COLORS



ACCESSORIES



Rotating Bracket



Installation: Surface Mounted
 Length Available: 1-3m
 Profile Color: Silver, Black Anodized, White Powder Coating
 Lens: Clear Optical Lens
 Input Cable: Endcaps, Profile Bottom, Profile Sides
 Quick Female/Male Connectors Input cable & Junction Box available

OPTICAL SERIES

► SL1707E12

ORDERING CODE

LUMINAIRE	FINISH	LENS	VoL	Power	Ra	CRI	INSTALL ACCS.	IP GRADE	CONTROL OPTOINS						
SL1707E12	W White	D Diffuser	12	14.40W/m	90	22-2200K, 24-2400K, 25-2500K	01 - Black&Red 22AWG	A - AMP male/female	E - Through Endcaps						
			12VDC	7.68W/m						22-2700K, 30-3000K, 35-3500K					
	B Black	O Opal	24	5.04W/m	95	22-2200K, 25-2500K, 27-2700K				02 - Black&White 22AWG	M - Molex male/female	B - Through profile end bottom			
			24VDC	5.04W/m									30-3000K, 35-3500K, 40-4000K		
	S Silver	C Clear	36	2.40W/m	95+	50-5000K, 65-6500K				03 - White PU protected 2 pin	D - DC male/female	S - Through profile side			
			36VDC	2.40W/m									TW	Tunable White - check your executive sales	
			48	5.76W/m									D2W	Dim To Warm - check your executive sales	
			48VDC	11.52W/m											04 - 3Pin cable for Tunable white
			24.00W/m	28.80W/m											
			5.18W/m	6.00W/m											
21.60W/m															

RECOMMEND LIGHT SOURCE

Performance	Part Code	LED QTY	Input Vol.	Power	CRI	Light Source Lumen	Diffuser Lens Lumen	Cutttable length	Max Run	PCB Width
General	FN-2835T-60	60pcs/m	12/24VDC	14.40 W/m	90+	1440 lm/m	1224 lm/m	12V=50mm 24V=100mm	12V=5m 24V=9m	10 mm
					95+	1238 lm/m	1052 lm/m			
High Efficiency	FN-H2835T-64	64pcs/m	24VDC	7.68 W/m	90+	1029 lm/m	875 lm/m	125mm	5m	10 mm
					95+	968 lm/m	823 lm/m			
	FN-H2835O-80	80pcs/m	24VDC	14.40W/m	90+	2275 lm/m	1934 lm/m	100mm	4m	10 mm
					95+	499 lm/m	424 lm/m			
Long Run	LN-2835T-60	60pcs/m	24VDC	5.04 W/m	90+	499 lm/m	424 lm/m	100mm	21m	10mm
					95+	413 lm/m	351 lm/m			
				2.4 W/m	90+	230 lm/m	196 lm/m	100mm	50mm	10 mm
					95+	190 lm/m	162 lm/m			
	LN-2835T-56	56pcs/m	48VDC	5.76 W/m	90+	668 lm/m	568 lm/m	250mm	35mm	10 mm
					95+	553 lm/m	470 lm/m			
Short Cut	FN-F2835A-60	60pcs/m	24VDC	14.4 W/m	90+	1239 lm/m	1003 lm/m	33.3mm	5.5mm	10 mm
					95+	979lm/m	832 lm/m			

OPTICAL SERIES

► SL1707E12

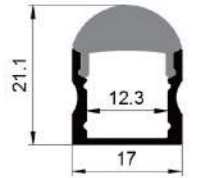
RECOMMEND LIGHT SOURCE

Performance	Part Code	LED QTY	Input Vol.	Power	CRI	Light Source Lumen	Diffuser Lens Lumen	Cuttable length	Max Run	PCB Width
General	FN-H2835T-120	120pcs/m	12/24VDC	14.40 W/m	90+	1512 lm/m	1285 lm/m	12V=50mm 24V=50mm	12V=5m 24V=9m	10 mm
					95+	1282 lm/m	1090 lm/m			
High Efficiency	FN-H2835T-128	128pcs/m	12/24VDC	11.52 W/m	90+	1613 lm/m	1371 lm/m	12V=31.2mm 24V=62.5mm	12V=3m 24V=6m	10 mm
					95+	1475 lm/m	1254 lm/m			
	FN-H28350-160	160pcs/m	24VDC	24 W/m	90+	3480 lm/m	3284 lm/m	50mm	3m	10 mm
					95+	1987 lm/m	1689 lm/m	12V=25mm 24V=50mm	12V=3mm 24V=5mm	
FN-H2835T-160	160pcs/m	12/24VDC	14.40 W/m	90+	1987 lm/m	1689 lm/m	12V=25mm 24V=50mm	12V=3mm 24V=5mm	10 mm	
				95+	1843 lm/m	1567 lm/m				
FN-H28350-192	192pcs/m	24VDC	28.8 W/m	90+	4176 lm/m	3941 lm/m	41.7mm	2.5m	10 mm	
				95+	482 lm/m	410 lm/m				
Long Run	LN-H2835T-80	80pcs/m	36VDC	5.18W/m	90+	580 lm/m	493 lm/m	100mm	50mm	10 mm
					95+	482 lm/m	410 lm/m			
	LN-H2835T-112	112pcs/m	48VDC	11.52 W/m	90+	1336 lm/m	1136 lm/m	125mm	25mm	10 mm
					95+	1106 lm/m	940 lm/m			
LN-H2835T-120	120pcs/m	24VDC	6.00 W/m	90+	588 lm/m	500 lm/m	50mm	21mm	10 mm	
				95+	486 lm/m	413 lm/m				
Short Cut	FN-F2835A-120	120pcs/m	24VDC	21.60 W/m	90+	1922 lm/m	1634 lm/m	16.7mm	3.5mm	10 mm
					95+	1595 lm/m	1356 lm/m			



OPTICAL SERIES

► SL1715C12



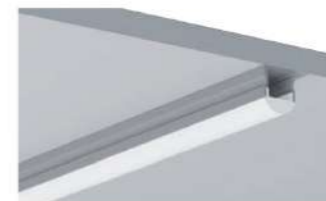
PROFILE COLORS



ACCESSORIES



Rotating Bracket



Installation: Surface Mounted
 Length Available: 1-3m
 Profile Color: Silver, Black Anodized, White Powder Coating
 Lens: Clear Optical Lens
 Input Cable: Endcaps, Profile Bottom, Profile Sides
 Quick Female/Male Connectors Input cable & Junction Box available

OPTICAL SERIES

► SL1715C12

ORDERING CODE

LUMINAIRE	FINISH	LENS	Vol.	Power	Ra	CRI	INSTALL ACCS.	IP GRADE	CONTROL OPTOINS
SL1715C12	W White	D Diffuser	12 12VDC	14.40W/m	90	22-2200K, 24-2400K, 25-2500K 27-2700K, 30-3000K, 35-3500K 40-4000K, 50-5000K, 65-6500K	01 - Black&Red 22AWG	A - AMP male/female	E - Through Endcaps
			24 24VDC	7.68W/m	90+				
	B Black	O Opal	24 24VDC	5.04W/m	95	22-2200K, 25-2500K, 27-2700K 30-3000K, 35-3500K, 40-4000K 50-5000K, 65-6500K	02 - Black&White 22AWG	M - Molex male/female	B - Through profile end bottom
			36 36VDC	2.40W/m	95+				
	S Silver	C Clear	36 36VDC	5.76W/m	TW	Tunable White - check your executive sales	03 - White PU protected 2 pin	D - DC male/female	S - Through profile side
			48 48VDC	11.52W/m					
				24.00W/m	D2W	Dim To Warm - check your executive sales	04 - 3Pin cable for Tunable white		
				28.80W/m					
				5.18W/m					
				6.00W/m					
			21.60W/m						

RECOMMEND LIGHT SOURCE

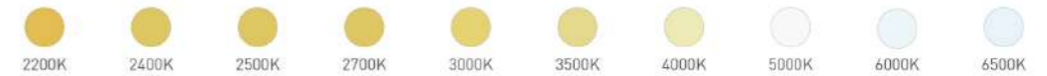
Performance	Part Code	LED QTY	Input Vol.	Power	CRI	Light Source Lumen	Diffuser Lens Lumen	Cutttable Length	Max Run	PCB Width		
General	FN-2835T-60	60pcs/m	12/24VDC	14.40 W/m	90+	1440 lm/m	1224 lm/m	12V=50mm 24V=100mm	12V=5m 24V=9m	10 mm		
					95+	1238 lm/m	1052 lm/m					
High Efficiency	FN-H2835T-64	64pcs/m	24VDC	7.68 W/m	90+	1029 lm/m	875 lm/m	125mm	5m	10 mm		
					95+	968 lm/m	823 lm/m					
Long Run	LN-2835T-60	60pcs/m	24VDC	5.04 W/m	90+	499 lm/m	424 lm/m	100mm	21m	10mm		
					95+	413 lm/m	351 lm/m					
				2.4 W/m	90+	230 lm/m	196 lm/m	100mm	50mm	10 mm		
					95+	190 lm/m	162 lm/m					
				5.76 W/m	56pcs/m	48VDC	90+	668 lm/m	568 lm/m	250mm	35mm	10 mm
							95+	553 lm/m	470 lm/m			
Short Cut	FN-F2835A-60	60pcs/m	24VDC	14.4 W/m	90+	1239 lm/m	1003 lm/m	33.3mm	5.5mm	10 mm		
					95+	979lm/m	832 lm/m					

OPTICAL SERIES

► SL1715C12

RECOMMEND LIGHT SOURCE

Performance	Part Code	LED QTY	Input Vol.	Power	CRI	Light Source Lumen	Diffuser Lens Lumen	Cutttable Length	Max Run	PCB Width							
General	FN-H2835T-120	120pcs/m	12/24VDC	14.40 W/m	90+	1512 lm/m	1285 lm/m	12V=50mm 24V=50mm	12V=5m 24V=9m	10 mm							
					95+	1282 lm/m	1090 lm/m										
High Efficiency	FN-H2835T-128	128pcs/m	12/24VDC	11.52 W/m	90+	1613 lm/m	1371 lm/m	12V=31.2mm 24V=62.5mm	12V=3m 24V=6m	10 mm							
					95+	1475 lm/m	1254 lm/m										
	FN-H28350-160	160pcs/m	24VDC	24 W/m	90+	3480 lm/m	3284 lm/m	50mm	3m	10 mm							
					FN-H2835T-160	160pcs/m	12/24VDC				14.40 W/m	90+	1987 lm/m	1689 lm/m	12V=25mm 24V=50mm	12V=3mm 24V=5mm	10 mm
												95+	1843 lm/m	1567 lm/m			
FN-H28350-192	192pcs/m	24VDC	28.8 W/m	90+	4176 lm/m	3941 lm/m	41.7mm	2.5m	10 mm								
				95+	482 lm/m	410 lm/m											
Long Run	LN-H2835T-80	80pcs/m	36VDC	5.18W/m	90+	580 lm/m	493 lm/m	100mm	50mm	10 mm							
					95+	482 lm/m	410 lm/m										
	LN-H2835T-112	112pcs/m	48VDC	11.52 W/m	90+	1336 lm/m	1136 lm/m	125mm	25mm	10 mm							
					95+	1106 lm/m	940 lm/m										
LN-H2835T-120	120pcs/m	24VDC	6.00 W/m	90+	588 lm/m	500 lm/m	50mm	21mm	10 mm								
				95+	486 lm/m	413 lm/m											
Short Cut	FN-F2835A-120	120pcs/m	24VDC	21.60 W/m	90+	1922 lm/m	1634 lm/m	16.7mm	3.5mm	10 mm							
					95+	1595 lm/m	1356 lm/m										



OPTICAL SERIES

► SL1715F12



PROFILE COLORS



ACCESSORIES



Rotating Bracket



Installation: Surface Mounted
 Length Available: 1-3m
 Profile Color: Silver, Black Anodized, White Powder Coating
 Lens: Clear Optical Lens
 Input Cable: Endcaps, Profile Bottom, Profile Sides
 Quick Female/Male Connectors Input cable & Junction Box available

OPTICAL SERIES

► SL1715F12

ORDERING CODE

LUMINAIRE	FINISH	LENS	Vol.	Power	Ra	CRI	INSTALL ACCS.	IP GRADE	CONTROL OPTOINS
SL1715F12	W White	D Diffuser	12 12VDC	14.40W/m	90 90+	22-2200K , 24-2400K , 25-2500K 27-2700K , 30-3000K , 35-3500K 40-4000K , 50-5000K , 65-6500K	01 - Black&Red 22AWG	A - AMP male/female	E - Through Endcaps
				7.68W/m					
	B Black	O Opal	24 24VDC	5.04W/m	95 95+	22-2200K , 25-2500K , 27-2700K 30-3000K , 35-3500K , 40-4000K 50-5000K , 65-6500K	02 - Black&White 22AWG	M - Molex male/female	B - Through profile end bottom
				2.40W/m					
	S Silver	C Clear	36 36VDC	5.76W/m	TW	Tunable White - check your executive sales	03 - White PU protected 2 pin	D - DC male/female	S - Through profile side
				11.52W/m					
			48 48VDC	24.00W/m	D2W	Dim To Warm - check your executive sales	04 - 3Pin cable for Tunable white		
				28.80W/m					
				5.18W/m					
				6.00W/m					
			21.60W/m						

RECOMMEND LIGHT SOURCE

Performance	Part Code	LED QTY	Input Vol.	Power	CRI	Light Source Lumen	Diffuser Lens Lumen	Cutable length	Max Run	PCB Width
General	FN-2835T-60	60pcs/m	12/24VDC	14.40 W/m	90+	1440 lm/m	1224 lm/m	12V=50mm 24V=100mm	12V=5m 24V=9m	10 mm
					95+	1238 lm/m	1052 lm/m			
High Efficiency	FN-H2835T-64	64pcs/m	24VDC	7.68 W/m	90+	1029 lm/m	875 lm/m	125mm	5m	10 mm
					95+	968 lm/m	823 lm/m			
	FN-H28350-80	80pcs/m	24VDC	14.40W/m	90+	2275 lm/m	1934 lm/m	100mm	4m	10 mm
Long Run	LN-2835T-60	60pcs/m	24VDC	5.04 W/m	90+	499 lm/m	424 lm/m	100mm	21m	10mm
					95+	413 lm/m	351 lm/m			
				2.4 W/m	90+	230 lm/m	196 lm/m	100mm	50mm	10 mm
					95+	190 lm/m	162 lm/m			
	LN-2835T-56	56pcs/m	48VDC	5.76 W/m	90+	668 lm/m	568 lm/m	250mm	35mm	10 mm
				95+	553 lm/m	470 lm/m				
Short Cut	FN-F2835A-60	60pcs/m	24VDC	14.4 W/m	90+	1239 lm/m	1003 lm/m	33.3mm	5.5mm	10 mm
					95+	979lm/m	832 lm/m			

OPTICAL SERIES

► SL1715F12

RECOMMEND LIGHT SOURCE

Performance	Part Code	LED QTY	Input Vol.	Power	CRI	Light Source Lumen	Diffuser Lens Lumen	Cuttable Length	Max Run	PCB Width
General	FN-H2835T-120	120pcs/m	12/24VDC	14.40 W/m	90+	1512 lm/m	1285 lm/m	12V=50mm 24V=50mm	12V=5m 24V=9m	10 mm
					95+	1282 lm/m	1090 lm/m			
High Efficiency	FN-H2835T-128	128pcs/m	12/24VDC	11.52 W/m	90+	1613 lm/m	1371 lm/m	12V=31.2mm 24V=62.5mm	12V=3m 24V=6m	10 mm
					95+	1475 lm/m	1254 lm/m			
	FN-H28350-160	160pcs/m	24VDC	24 W/m	90+	3480 lm/m	3284 lm/m	50mm	3m	10 mm
					95+	1987 lm/m	1689 lm/m	12V=25mm 24V=50mm	12V=3mm 24V=5mm	10 mm
FN-H2835T-160	160pcs/m	12/24VDC	14.40 W/m	90+	1987 lm/m	1689 lm/m	12V=25mm 24V=50mm	12V=3mm 24V=5mm	10 mm	
				95+	1843 lm/m	1567 lm/m				
FN-H28350-192	192pcs/m	24VDC	28.8 W/m	90+	4176 lm/m	3941 lm/m	41.7mm	2.5m	10 mm	
				95+	482 lm/m	410 lm/m				
Long Run	LN-H2835T-80	80pcs/m	36VDC	5.18W/m	90+	580 lm/m	493 lm/m	100mm	50mm	10 mm
					95+	482 lm/m	410 lm/m			
	LN-H2835T-112	112pcs/m	48VDC	11.52 W/m	90+	1336 lm/m	1136 lm/m	125mm	25mm	10 mm
					95+	1106 lm/m	940 lm/m			
LN-H2835T-120	120pcs/m	24VDC	6.00 W/m	90+	588 lm/m	500 lm/m	50mm	21mm	10 mm	
				95+	486 lm/m	413 lm/m				
Short Cut	FN-F2835A-120	120pcs/m	24VDC	21.60 W/m	90+	1922 lm/m	1634 lm/m	16.7mm	3.5mm	10 mm
					95+	1595 lm/m	1356 lm/m			



OPTICAL SERIES

► SL1815D10



PROFILE COLORS



ACCESSORIES



Rotating Bracket



Installation: Surface Mounted
 Length Available: 1-3m
 Profile Color: Silver, Black Anodized, White Powder Coating
 Lens: Clear Optical Lens
 Input Cable: Endcaps, Profile Bottom, Profile Sides
 Quick Female/Male Connectors Input cable & Junction Box available

OPTICAL SERIES

► SL1815D10

ORDERING CODE

LUMINAIRE	FINISH	LENS	Vol.	Power	Ra	CRI	INSTALL ACCS.	IP GRADE	CONTROL OPTOINS
SL1815D10	W White	D Diffuser	12 12VDC	14.40W/m	90	22-2200K, 24-2400K, 25-2500K 27-2700K, 30-3000K, 35-3500K 40-4000K, 50-5000K, 65-6500K	01 - Black&Red 22AWG	A - AMP male/female	E - Through Endcaps
			24 24VDC	7.68W/m	90+				
	B Black	O Opal	24 24VDC	5.04W/m	95	22-2200K, 25-2500K, 27-2700K 30-3000K, 35-3500K, 40-4000K 50-5000K, 65-6500K	02 - Black&White 22AWG	M - Molex male/female	B - Through profile end bottom
			36 36VDC	2.40W/m	95+				
	S Silver	C Clear	36 36VDC	5.76W/m	TW	Tunable White - check your executive sales	03 - White PU protected 2 pin	D - DC male/female	S - Through profile side
			48 48VDC	11.52W/m					
				24.00W/m	D2W	Dim To Warm - check your executive sales	04 - 3Pin cable for Tunable white		
				28.80W/m					
				5.18W/m					
				6.00W/m					
			21.60W/m						

RECOMMEND LIGHT SOURCE

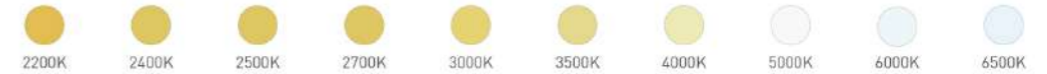
Performance	Part Code	LED QTY	Input Vol.	Power	CRI	Light Source Lumen	Diffuser Lens Lumen	Cutttable Length	Max Run	PCB Width
General	FN-2835T-60	60pcs/m	12/24VDC	14.40 W/m	90+	1440 lm/m	1224 lm/m	12V=50mm 24V=100mm	12V=5m 24V=9m	10 mm
					95+	1238 lm/m	1052 lm/m			
High Efficiency	FN-H2835T-64	64pcs/m	24VDC	7.68 W/m	90+	1029 lm/m	875 lm/m	125mm	5m	10 mm
					95+	968 lm/m	823 lm/m			
	FN-H28350-80	80pcs/m	24VDC	14.40W/m	90+	2275 lm/m	1934 lm/m	100mm	4m	10 mm
					95+	2275 lm/m	1934 lm/m			
Long Run	LN-2835T-60	60pcs/m	24VDC	5.04 W/m	90+	499 lm/m	424 lm/m	100mm	21m	10mm
					95+	413 lm/m	351 lm/m			
				2.4 W/m	90+	230 lm/m	196 lm/m	100mm	50mm	10 mm
					95+	190 lm/m	162 lm/m			
	LN-2835T-56	56pcs/m	48VDC	5.76 W/m	90+	668 lm/m	568 lm/m	250mm	35mm	10 mm
					95+	553 lm/m	470 lm/m			
Short Cut	FN-F2835A-60	60pcs/m	24VDC	14.4 W/m	90+	1239 lm/m	1003 lm/m	33.3mm	5.5mm	10 mm
					95+	979lm/m	832 lm/m			

OPTICAL SERIES

► SL1815D10

RECOMMEND LIGHT SOURCE

Performance	Part Code	LED QTY	Input Vol.	Power	CRI	Light Source Lumen	Diffuser Lens Lumen	Cutttable Length	Max Run	PCB Width
General	FN-H2835T-120	120pcs/m	12/24VDC	14.40 W/m	90+	1512 lm/m	1285 lm/m	12V=50mm 24V=50mm	12V=5m 24V=9m	10 mm
					95+	1282 lm/m	1090 lm/m			
High Efficiency	FN-H2835T-128	128pcs/m	12/24VDC	11.52 W/m	90+	1613 lm/m	1371 lm/m	12V=31.2mm 24V=62.5mm	12V=3m 24V=6m	10 mm
					95+	1475 lm/m	1254 lm/m			
	FN-H28350-160	160pcs/m	24VDC	24 W/m	90+	3480 lm/m	3284 lm/m	50mm	3m	10 mm
					95+	3480 lm/m	3284 lm/m			
Long Run	FN-H2835T-160	160pcs/m	12/24VDC	14.40 W/m	90+	1987 lm/m	1689 lm/m	12V=25mm 24V=50mm	12V=3mm 24V=5mm	10 mm
					95+	1843 lm/m	1567 lm/m			
	FN-H28350-192	192pcs/m	24VDC	28.8 W/m	90+	4176 lm/m	3941 lm/m	41.7mm	2.5m	10 mm
					95+	4176 lm/m	3941 lm/m			
Short Cut	LN-H2835T-80	80pcs/m	36VDC	5.18W/m	90+	580 lm/m	493 lm/m	100mm	50mm	10 mm
					95+	482 lm/m	410 lm/m			
	LN-H2835T-112	112pcs/m	48VDC	11.52 W/m	90+	1336 lm/m	1136 lm/m	125mm	25mm	10 mm
					95+	1106 lm/m	940 lm/m			
LN-H2835T-120	120pcs/m	24VDC	6.00 W/m	90+	588 lm/m	500 lm/m	50mm	21mm	10 mm	
				95+	486 lm/m	413 lm/m				
Short Cut	FN-F2835A-120	120pcs/m	24VDC	21.60 W/m	90+	1922 lm/m	1634 lm/m	16.7mm	3.5mm	10 mm
					95+	1595 lm/m	1356 lm/m			



OPTICAL SERIES

► SL1815F10



CLEAR OPTICAL LENS

PROFILE COLORS



ACCESSORIES



Rotating Bracket



Installation: Surface Mounted
 Length Available: 1-3m
 Profile Color: Silver, Black Anodized, White Powder Coating
 Lens: Clear Optical Lens
 Input Cable: Endcaps, Profile Bottom, Profile Sides
 Quick Female/Male Connectors Input cable & Junction Box available

OPTICAL SERIES

► SL1815F10

ORDERING CODE

LUMINAIRE	FINISH	LENS	Vol.	Power	Ra	CRI	INSTALL ACCS.	IP GRADE	CONTROL OPTOINS
SL1815F10	W White	D Diffuser	12 12VDC	14.40W/m	90 90+	22-2200K, 24-2400K, 25-2500K 27-2700K, 30-3000K, 35-3500K 40-4000K, 50-5000K, 65-6500K	01 - Black&Red 22AWG	A - AMP male/female	E - Through Endcaps
			24 24VDC	7.68W/m					
	B Black	O Opal	24 24VDC	5.04W/m	95 95+	22-2200K, 25-2500K, 27-2700K 30-3000K, 35-3500K, 40-4000K 50-5000K, 65-6500K	02 - Black&White 22AWG	M - Molex male/female	B - Through profile end bottom
			36 36VDC	2.40W/m					
	S Silver	C Clear	48 48VDC	5.76W/m	TW	Tunable White - check your executive sales	03 - White PU protected 2 pin	D - DC male/female	S - Through profile side
			48 48VDC	11.52W/m					
				24.00W/m	D2W	Dim To Warm - check your executive sales	04 - 3Pin cable for Tunable white		
				28.80W/m					
				5.18W/m					
				6.00W/m					
			21.60W/m						

RECOMMEND LIGHT SOURCE

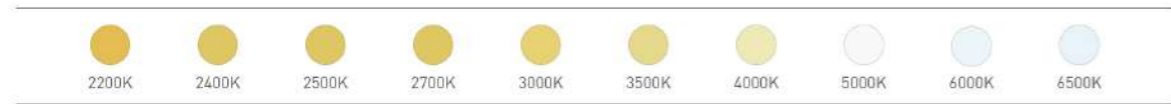
Performance	Part Code	LED QTY	Input Vol.	Power	CRI	Light Source Lumen	Diffuser Lens Lumen	Cutttable length	Max Run	PCB Width
General	FN-2835T-60	60pcs/m	12/24VDC	14.40 W/m	90+	1440 lm/m	1224 lm/m	12V=50mm 24V=100mm	12V=5m 24V=9m	10 mm
					95+	1238 lm/m	1052 lm/m			
High Efficiency	FN-H2835T-64	64pcs/m	24VDC	7.68 W/m	90+	1029 lm/m	875 lm/m	125mm	5m	10 mm
					95+	968 lm/m	823 lm/m			
Long Run	LN-2835T-60	60pcs/m	24VDC	5.04 W/m	90+	499 lm/m	424 lm/m	100mm	21m	10mm
					95+	413 lm/m	351 lm/m			
				2.4 W/m	90+	230 lm/m	196 lm/m	100mm	50mm	10 mm
					95+	190 lm/m	162 lm/m			
	LN-2835T-56	56pcs/m	48VDC	5.76 W/m	90+	668 lm/m	568 lm/m	250mm	35mm	10 mm
					95+	553 lm/m	470 lm/m			
Short Cut	FN-F2835A-60	60pcs/m	24VDC	14.4 W/m	90+	1239 lm/m	1003 lm/m	33.3mm	5.5mm	10 mm
					95+	979lm/m	832 lm/m			

OPTICAL SERIES

► SL1815F10

RECOMMEND LIGHT SOURCE

Performance	Part Code	LED QTY	Input VoL	Power	CRI	Light Source Lumen	Diffuser Lens Lumen	Cutttable length	Max Run	PCB Width
General	FN-H2835T-120	120pcs/m	12/24VDC	14.40 W/m	90+	1512 lm/m	1285 lm/m	12V=50mm 24V=50mm	12V=5m 24V=9m	10 mm
					95+	1282 lm/m	1090 lm/m			
High Efficiency	FN-H2835T-128	128pcs/m	12/24VDC	11.52 W/m	90+	1613 lm/m	1371 lm/m	12V=31.2mm 24V=62.5mm	12V=3m 24V=6m	10 mm
					95+	1475 lm/m	1254 lm/m			
	FN-H2835O-160	160pcs/m	24VDC	24 W/m	90+	3480 lm/m	3284 lm/m	50mm	3m	10 mm
	FN-H2835T-160	160pcs/m	12/24VDC	14.40 W/m	90+	1987 lm/m	1689 lm/m	12V=25mm 24V=50mm	12V=3mm 24V=5mm	10 mm
	FN-H2835O-192	192pcs/m	24VDC	28.8 W/m	90+	4176 lm/m	3941 lm/m	41.7mm	2.5m	10 mm
Long Run	LN-H2835T-80	80pcs/m	36VDC	5.18W/m	90+	580 lm/m	493 lm/m	100mm	50mm	10 mm
					95+	482 lm/m	410 lm/m			
	LN-H2835T-112	112pcs/m	48VDC	11.52 W/m	90+	1336 lm/m	1136 lm/m	125mm	25mm	10 mm
					95+	1106 lm/m	940 lm/m			
LN-H2835T-120	120pcs/m	24VDC	6.00 W/m	90+	588 lm/m	500 lm/m	50mm	21mm	10 mm	
				95+	486 lm/m	413 lm/m				
Short Cut	FN-F2835A-120	120pcs/m	24VDC	21.60 W/m	90+	1922 lm/m	1634 lm/m	16.7mm	3.5mm	10 mm
					95+	1595 lm/m	1356 lm/m			



OPTICAL SERIES

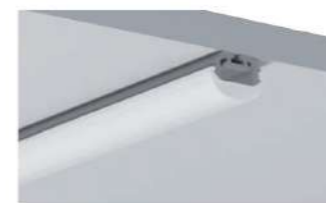
► SL1815G10



ACCESSORIES



Rotating Bracket



Installation: Surface Mounted
 Length Available: 1-3m
 Profile Color: Silver, Black Anodized, White Powder Coating
 Lens: Clear Optical Lens
 Input Cable: Endcaps, Profile Bottom, Profile Sides
 Quick Female/Male Connectors Input cable & Junction Box available

OPTICAL SERIES

► SL1815G10

OPTICAL SERIES

► SL1815G10

ORDERING CODE

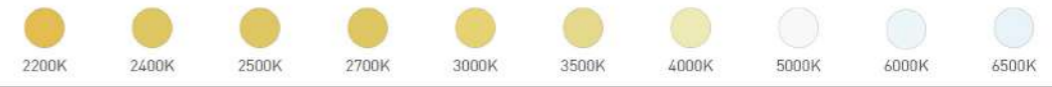
LUMINAIRE	FINISH	LENS	Vol.	Power	Ra	CRI	INSTALL ACCS.	IP GRADE	CONTROL OPTOINS
SL1815G10	W White	D Diffuser	12 12VDC	14.40W/m	90 90+	22-2200K, 24-2400K, 25-2500K 27-2700K, 30-3000K, 35-3500K 40-4000K, 50-5000K, 65-6500K	01 - Black&Red 22AWG	A - AMP male/female	E - Through Endcaps
			24 24VDC	7.68W/m					
	B Black	O Opal	24 24VDC	5.04W/m	95 95+	22-2200K, 25-2500K, 27-2700K 30-3000K, 35-3500K, 40-4000K 50-5000K, 65-6500K	02 - Black&White 22AWG	M - Molex male/female	B - Through profile end bottom
			36 36VDC	2.40W/m					
	S Silver	C Clear	36 36VDC	5.76W/m	TW	Tunable White - check your executive sales	03 - White PU protected 2 pin	D - DC male/female	S - Through profile side
			48 48VDC	11.52W/m					
				24.00W/m	D2W	Dim To Warm - check your executive sales	04 - 3Pin cable for Tunable white		
				28.80W/m					
				5.18W/m					
				6.00W/m					
			21.60W/m						

RECOMMEND LIGHT SOURCE

Performance	Part Code	LED QTY	Input Vol.	Power	CRI	Light Source Lumen	Diffuser Lens Lumen	Cutttable length	Max Run	PCB Width
General	FN-H2835T-120	120pcs/m	12/24VDC	14.40 W/m	90+	1512 lm/m	1285 lm/m	12V=50mm 24V=50mm	12V=5m 24V=9m	10 mm
					95+	1282 lm/m	1090 lm/m			
High Efficiency	FN-H2835T-128	128pcs/m	12/24VDC	11.52 W/m	90+	1613 lm/m	1371 lm/m	12V=31.2mm 24V=62.5mm	12V=3m 24V=6m	10 mm
					95+	1475 lm/m	1254 lm/m			
	FN-H28350-160	160pcs/m	24VDC	24 W/m	90+	3480 lm/m	3284 lm/m	50mm	3m	10 mm
					90+	1987 lm/m	1689 lm/m			
					95+	1843 lm/m	1567 lm/m			
FN-H2835T-160	160pcs/m	12/24VDC	14.40 W/m	90+	1987 lm/m	1689 lm/m	12V=25mm 24V=50mm	12V=3mm 24V=5mm	10 mm	
				95+	1843 lm/m	1567 lm/m				
				90+	4176 lm/m	3941 lm/m				41.7mm
Long Run	LN-H2835T-80	80pcs/m	36VDC	5.18W/m	90+	580 lm/m	493 lm/m	100mm	50mm	10 mm
					95+	482 lm/m	410 lm/m			
	LN-H2835T-112	112pcs/m	48VDC	11.52 W/m	90+	1336 lm/m	1136 lm/m	125mm	25mm	10 mm
					95+	1106 lm/m	940 lm/m			
	LN-H2835T-120	120pcs/m	24VDC	6.00 W/m	90+	588 lm/m	500 lm/m	50mm	21mm	10 mm
					95+	486 lm/m	413 lm/m			
Short Cut	FN-F2835A-120	120pcs/m	24VDC	21.60 W/m	90+	1922 lm/m	1634 lm/m	16.7mm	3.5mm	10 mm
					95+	1595 lm/m	1356 lm/m			

RECOMMEND LIGHT SOURCE

Performance	Part Code	LED QTY	Input Vol.	Power	CRI	Light Source Lumen	Diffuser Lens Lumen	Cutttable length	Max Run	PCB Width
General	FN-2835T-60	60pcs/m	12/24VDC	14.40 W/m	90+	1440 lm/m	1224 lm/m	12V=50mm 24V=100mm	12V=5m 24V=9m	10 mm
					95+	1238 lm/m	1052 lm/m			
High Efficiency	FN-H2835T-64	64pcs/m	24VDC	7.68 W/m	90+	1029 lm/m	875 lm/m	125mm	5m	10 mm
					95+	968 lm/m	823 lm/m			
	FN-H28350-80	80pcs/m	24VDC	14.40W/m	90+	2275 lm/m	1934 lm/m	100mm	4m	10 mm
Long Run	LN-2835T-60	60pcs/m	24VDC	5.04 W/m	90+	499 lm/m	424 lm/m	100mm	21m	10mm
					95+	413 lm/m	351 lm/m			
				2.4 W/m	90+	230 lm/m	196 lm/m	100mm	50mm	10 mm
					95+	190 lm/m	162 lm/m			
LN-2835T-56	56pcs/m	48VDC	5.76 W/m	90+	668 lm/m	568 lm/m	250mm	35mm	10 mm	
				95+	553 lm/m	470 lm/m				
Short Cut	FN-F2835A-60	60pcs/m	24VDC	14.4 W/m	90+	1239 lm/m	1003 lm/m	33.3mm	5.5mm	10 mm
					95+	979lm/m	832 lm/m			

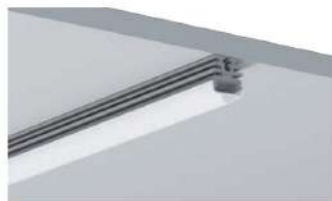


OPTICAL SERIES

► SL1824B12



PROFILE COLORS



Installation: Surface Mounted
 Length Available: 1-3m
 Profile Color: Silver, Black Anodized, White Powder Coating
 Lens: Clear Optical Lens
 Input Cable: Endcaps, Profile Bottom, Profile Sides
 Quick Female/Male Connectors Input cable & Junction Box available

OPTICAL SERIES

► SL1824B12

ORDERING CODE

LUMINAIRE	FINISH	LENS	VoL	Power	Ra	CRI	INSTALL ACCS.	IP GRADE	CONTROL OPTOINS
SL1824B12	W White	D Diffuser	12 12VDC	14.40W/m	90 90+	22-2200K, 24-2400K, 25-2500K 27-2700K, 30-3000K, 35-3500K 40-4000K, 50-5000K, 65-6500K	01 - Black&Red 22AWG	A - AMP male/female	E - Through Endcaps
			24 24VDC	7.68W/m					
	B Black	O Opal	24 24VDC	5.04W/m	95 95+	22-2200K, 25-2500K, 27-2700K 30-3000K, 35-3500K, 40-4000K 50-5000K, 65-6500K	02 - Black&White 22AWG	M - Molex male/female	B - Through profile end bottom
			36 36VDC	2.40W/m					
	S Silver	C Clear	48 48VDC	5.76W/m	TW	Tunable White - check your executive sales	03 - White PU protected 2 pin	D - DC male/female	S - Through profile side
			24.00W/m						
				28.80W/m	D2W	Dim To Warm - check your executive sales	04 - 3Pin cable for Tunable white		
				5.18W/m					
				6.00W/m					
				21.60W/m					

RECOMMEND LIGHT SOURCE

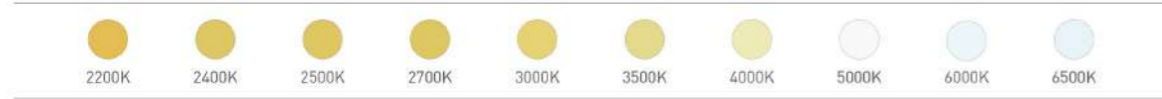
Performance	Part Code	LED QTY	Input Vol.	Power	CRI	Light Source Lumen	Diffuser Lens Lumen	Cutttable length	Max Run	PCB Width
General	FN-2835T-60	60pcs/m	12/24VDC	14.40 W/m	90+	1440 lm/m	1224 lm/m	12V=50mm 24V=100mm	12V=5m 24V=9m	10 mm
					95+	1238 lm/m	1052 lm/m			
High Efficiency	FN-H2835T-64	64pcs/m	24VDC	7.68 W/m	90+	1029 lm/m	875 lm/m	125mm	5m	10 mm
					95+	968 lm/m	823 lm/m			
	FN-H28350-80	80pcs/m	24VDC	14.40W/m	90+	2275 lm/m	1934 lm/m	100mm	4m	10 mm
Long Run	LN-2835T-60	60pcs/m	24VDC	5.04 W/m	90+	499 lm/m	424 lm/m	100mm	21m	10mm
					95+	413 lm/m	351 lm/m			
				2.4 W/m	90+	230 lm/m	196 lm/m	100mm	50mm	10 mm
					95+	190 lm/m	162 lm/m			
	LN-2835T-56	56pcs/m	48VDC	5.76 W/m	90+	668 lm/m	568 lm/m	250mm	35mm	10 mm
					95+	553 lm/m	470 lm/m			
Short Cut	FN-F2835A-60	60pcs/m	24VDC	14.4 W/m	90+	1239 lm/m	1003 lm/m	33.3mm	5.5mm	10 mm
					95+	979lm/m	832 lm/m			

OPTICAL SERIES

► SL1824B12

RECOMMEND LIGHT SOURCE

Performance	Part Code	LED QTY	Input Vol.	Power	CRI	Light Source Lumen	Diffuser Lens Lumen	Cuttable length	Max Run	PCB Width
General	FN-H2835T-120	120pcs/m	12/24VDC	14.40 W/m	90+	1512 lm/m	1285 lm/m	12V=50mm 24V=50mm	12V=5m 24V=9m	10 mm
					95+	1282 lm/m	1090 lm/m			
High Efficiency	FN-H2835T-128	128pcs/m	12/24VDC	11.52 W/m	90+	1613 lm/m	1371 lm/m	12V=31.2mm 24V=62.5mm	12V=3m 24V=6m	10 mm
					95+	1475 lm/m	1254 lm/m			
	FN-H28350-160	160pcs/m	24VDC	24 W/m	90+	3480 lm/m	3284 lm/m	50mm	3m	10 mm
	FN-H2835T-160	160pcs/m	12/24VDC	14.40 W/m	90+	1987 lm/m	1689 lm/m	12V=25mm 24V=50mm	12V=3m 24V=5mm	10 mm
					95+	1843 lm/m	1567 lm/m			
FN-H28350-192	192pcs/m	24VDC	28.8 W/m	90+	4176 lm/m	3941 lm/m	41.7mm	2.5m	10 mm	
Long Run	LN-H2835T-80	80pcs/m	36VDC	5.18W/m	90+	580 lm/m	493 lm/m	100mm	50mm	10 mm
					95+	482 lm/m	410 lm/m			
	LN-H2835T-112	112pcs/m	48VDC	11.52 W/m	90+	1336 lm/m	1136 lm/m	125mm	25mm	10 mm
					95+	1106 lm/m	940 lm/m			
	LN-H2835T-120	120pcs/m	24VDC	6.00 W/m	90+	588 lm/m	500 lm/m	50mm	21mm	10 mm
					95+	486 lm/m	413 lm/m			
Short Cut	FN-F2835A-120	120pcs/m	24VDC	21.60 W/m	90+	1922 lm/m	1634 lm/m	16.7mm	3.5mm	10 mm
					95+	1595 lm/m	1356 lm/m			



OPTICAL SERIES

► SL1919F12



Installation: Angular Surface Mounted
 Length Available: 1-3m
 Profile Color: Silver, Black Anodized, White Powder Coating
 Lens: Clear Optical Lens
 Input Cable: Endcaps, Profile Bottom, Profile Sides
 Quick Female/Male Connectors Input cable & Junction Box available

OPTICAL SERIES

► SL1919F12

ORDERING CODE

LUMINAIRE	FINISH	LENS	Vol.	Power	Ra	CRI	INSTALL ACCS.	IP GRADE	CONTROL OPTOINS
SL1919F12	W White	D Diffuser	12 12VDC	14.40W/m	90	22-2200K, 24-2400K, 25-2500K 27-2700K, 30-3000K, 35-3500K 40-4000K, 50-5000K, 65-6500K	01 - Black&Red 22AWG	A - AMP male/female	E - Through Endcaps
			24 24VDC	7.68W/m	90+				
	B Black	O Opal	24 24VDC	5.04W/m	95	22-2200K, 25-2500K, 27-2700K 30-3000K, 35-3500K, 40-4000K 50-5000K, 65-6500K	02 - Black&White 22AWG	M - Molex male/female	B - Through profile end bottom
			36 36VDC	2.40W/m	95+				
	S Silver	C Clear	36 36VDC	5.76W/m	TW	Tunable White - check your executive sales	03 - White PU protected 2 pin	D - DC male/female	S - Through profile side
			48 48VDC	11.52W/m					
				24.00W/m	D2W	Dim To Warm - check your executive sales	04 - 3Pin cable for Tunable white		
				28.80W/m					
				5.18W/m					
				6.00W/m					
			21.60W/m						

RECOMMEND LIGHT SOURCE

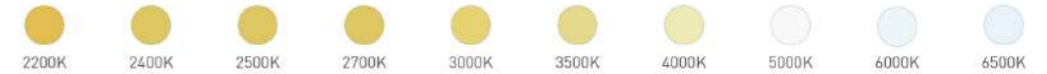
Performance	Part Code	LED QTY	Input Vol.	Power	CRI	Light Source Lumen	Diffuser Lens Lumen	Cutttable Length	Max Run	PCB Width			
General	FN-2835T-60	60pcs/m	12/24VDC	14.40 W/m	90+	1440 lm/m	1224 lm/m	12V=50mm 24V=100mm	12V=5m 24V=9m	10 mm			
					95+	1238 lm/m	1052 lm/m						
High Efficiency	FN-H2835T-64	64pcs/m	24VDC	7.68 W/m	90+	1029 lm/m	875 lm/m	125mm	5m	10 mm			
					95+	968 lm/m	823 lm/m						
Long Run	LN-2835T-60	60pcs/m	24VDC	5.04 W/m	90+	499 lm/m	424 lm/m	100mm	21m	10mm			
					95+	413 lm/m	351 lm/m						
				2.4 W/m	90+	230 lm/m	196 lm/m	100mm	50mm	10 mm			
					95+	190 lm/m	162 lm/m						
				5.76 W/m	LN-2835T-56	56pcs/m	48VDC	90+	668 lm/m	568 lm/m	250mm	35mm	10 mm
								95+	553 lm/m	470 lm/m			
Short Cut	FN-F2835A-60	60pcs/m	24VDC	14.4 W/m	90+	1239 lm/m	1003 lm/m	33.3mm	5.5mm	10 mm			
					95+	979lm/m	832 lm/m						

OPTICAL SERIES

► SL1919F12

RECOMMEND LIGHT SOURCE

Performance	Part Code	LED QTY	Input Vol.	Power	CRI	Light Source Lumen	Diffuser Lens Lumen	Cutttable Length	Max Run	PCB Width							
General	FN-H2835T-120	120pcs/m	12/24VDC	14.40 W/m	90+	1512 lm/m	1285 lm/m	12V=50mm 24V=50mm	12V=5m 24V=9m	10 mm							
					95+	1282 lm/m	1090 lm/m										
High Efficiency	FN-H2835T-128	128pcs/m	12/24VDC	11.52 W/m	90+	1613 lm/m	1371 lm/m	12V=31.2mm 24V=62.5mm	12V=3m 24V=6m	10 mm							
					95+	1475 lm/m	1254 lm/m										
	FN-H28350-160	160pcs/m	24VDC	24 W/m	90+	3480 lm/m	3284 lm/m	50mm	3m	10 mm							
					FN-H2835T-160	160pcs/m	12/24VDC				14.40 W/m	90+	1987 lm/m	1689 lm/m	12V=25mm 24V=50mm	12V=3mm 24V=5mm	10 mm
												95+	1843 lm/m	1567 lm/m			
FN-H28350-192	192pcs/m	24VDC	28.8 W/m	90+	4176 lm/m	3941 lm/m	41.7mm	2.5m	10 mm								
				95+	482 lm/m	410 lm/m											
Long Run	LN-H2835T-80	80pcs/m	36VDC	5.18W/m	90+	580 lm/m	493 lm/m	100mm	50mm	10 mm							
					95+	482 lm/m	410 lm/m										
	LN-H2835T-112	112pcs/m	48VDC	11.52 W/m	90+	1336 lm/m	1136 lm/m	125mm	25mm	10 mm							
					95+	1106 lm/m	940 lm/m										
LN-H2835T-120	120pcs/m	24VDC	6.00 W/m	90+	588 lm/m	500 lm/m	50mm	21mm	10 mm								
				95+	486 lm/m	413 lm/m											
Short Cut	FN-F2835A-120	120pcs/m	24VDC	21.60 W/m	90+	1922 lm/m	1634 lm/m	16.7mm	3.5mm	10 mm							
					95+	1595 lm/m	1356 lm/m										



OPTICAL SERIES

► SL2019F15



PROFILE COLORS



Installation: Surface Mounted
 Length Available: 1-3m
 Profile Color: Silver, Black Anodized, White Powder Coating
 Lens: Clear Optical Lens
 Input Cable: Endcaps, Profile Bottom, Profile Sides
 Quick Female/Male Connectors Input cable & Junction Box available

OPTICAL SERIES

► SL2019F15

ORDERING CODE

LUMINAIRE	FINISH	LENS	Vol.	Power	Ra	CRI	INSTALL ACCS.	IP GRADE	CONTROL OPTOINS
SL2019F15	W White	D Diffuser	12 12VDC	14.40W/m	90 90+	22-2200K , 24-2400K , 25-2500K 27-2700K , 30-3000K , 35-3500K 40-4000K , 50-5000K , 65-6500K	01 - Black&Red 22AWG 02 - Black&White 22AWG 03 - White PU protected 2 pin 04 - 3Pin cable for Tunable white	A - AMP male/female M - Molex male/female D - DC male/female	E - Through Endcaps B - Through profile end bottom S - Through profile side
			24 24VDC	7.68W/m					
	B Black	O Opal	24 24VDC	5.04W/m	95 95+	22-2200K , 25-2500K , 27-2700K 30-3000K , 35-3500K , 40-4000K 50-5000K , 65-6500K			
			36 36VDC	2.40W/m					
	S Silver	C Clear	36 36VDC	5.76W/m	TW	Tunable White - check your executive sales			
			48 48VDC	11.52W/m					
				24.00W/m	D2W	Dim To Warm - check your executive sales			
				28.80W/m					
				5.18W/m					
				6.00W/m					
			21.60W/m						

RECOMMEND LIGHT SOURCE

Performance	Part Code	LED QTY	Input Vol.	Power	CRI	Light Source Lumen	Diffuser Lens Lumen	Cutttable length	Max Run	PCB Width
General	FN-2835T-60	60pcs/m	12/24VDC	14.40 W/m	90+	1440 lm/m	1224 lm/m	12V=50mm 24V=100mm	12V=5m 24V=9m	10 mm
					95+	1238 lm/m	1052 lm/m			
High Efficiency	FN-H2835T-64	64pcs/m	24VDC	7.68 W/m	90+	1029 lm/m	875 lm/m	125mm	5m	10 mm
					95+	968 lm/m	823 lm/m			
	FN-H2835O-80	80pcs/m	24VDC	14.40W/m	90+	2275 lm/m	1934 lm/m	100mm	4m	10 mm
					95+	499 lm/m	424 lm/m			
Long Run	LN-2835T-60	60pcs/m	24VDC	5.04 W/m	90+	499 lm/m	424 lm/m	100mm	21m	10mm
					95+	413 lm/m	351 lm/m			
				2.4 W/m	90+	230 lm/m	196 lm/m	100mm	50mm	10 mm
					95+	190 lm/m	162 lm/m			
	LN-2835T-56	56pcs/m	48VDC	5.76 W/m	90+	668 lm/m	568 lm/m	250mm	35mm	10 mm
					95+	553 lm/m	470 lm/m			
Short Cut	FN-F2835A-60	60pcs/m	24VDC	14.4 W/m	90+	1239 lm/m	1003 lm/m	33.3mm	5.5mm	10 mm
					95+	979lm/m	832 lm/m			

OPTICAL SERIES

► SL2019F15

RECOMMEND LIGHT SOURCE

Performance	Part Code	LED QTY	Input Vol.	Power	CRI	Light Source Lumen	Diffuser Lens Lumen	Cuttable length	Max Run	PCB Width
General	FN-H2835T-120	120pcs/m	12/24VDC	14.40 W/m	90+	1512 lm/m	1285 lm/m	12V=50mm 24V=50mm	12V=5m 24V=9m	10 mm
					95+	1282 lm/m	1090 lm/m			
High Efficiency	FN-H2835T-128	128pcs/m	12/24VDC	11.52 W/m	90+	1613 lm/m	1371 lm/m	12V=31.2mm 24V=62.5mm	12V=3m 24V=6m	10 mm
					95+	1475 lm/m	1254 lm/m			
	FN-H28350-160	160pcs/m	24VDC	24 W/m	90+	3480 lm/m	3284 lm/m	50mm	3m	10 mm
					95+	1987 lm/m	1689 lm/m	12V=25mm 24V=50mm	12V=3mm 24V=5mm	
FN-H2835T-160	160pcs/m	12/24VDC	14.40 W/m	90+	1987 lm/m	1689 lm/m	12V=25mm 24V=50mm	12V=3mm 24V=5mm	10 mm	
				95+	1843 lm/m	1567 lm/m				
FN-H28350-192	192pcs/m	24VDC	28.8 W/m	90+	4176 lm/m	3941 lm/m	41.7mm	2.5m	10 mm	
Long Run	LN-H2835T-80	80pcs/m	36VDC	5.18W/m	90+	580 lm/m	493 lm/m	100mm	50mm	10 mm
					95+	482 lm/m	410 lm/m			
	LN-H2835T-112	112pcs/m	48VDC	11.52 W/m	90+	1336 lm/m	1136 lm/m	125mm	25mm	10 mm
					95+	1106 lm/m	940 lm/m			
	LN-H2835T-120	120pcs/m	24VDC	6.00 W/m	90+	588 lm/m	500 lm/m	50mm	21mm	10 mm
					95+	486 lm/m	413 lm/m			
Short Cut	FN-F2835A-120	120pcs/m	24VDC	21.60 W/m	90+	1922 lm/m	1634 lm/m	16.7mm	3.5mm	10 mm
					95+	1595 lm/m	1356 lm/m			

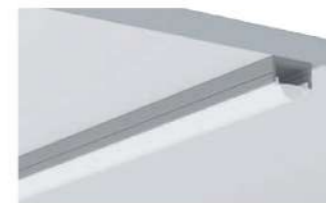


OPTICAL SERIES

► SL2016G16



PROFILE COLORS



Installation: Surface Mounted
 Length Available: 1-3m
 Profile Color: Silver, Black Anodized, White Powder Coating
 Lens: Clear Optical Lens
 Input Cable: Endcaps, Profile Bottom, Profile Sides
 Quick Female/Male Connectors Input cable & Junction Box available

ORDERING CODE

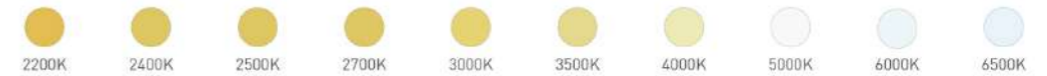
LUMINAIRE	FINISH	LENS	Vol.	Power	Ra	CRI	INSTALL ACCS.	IP GRADE	CONTROL OPTOINS
SL2016G16	W White	D Diffuser	12 12VDC	14.40W/m	90	22-2200K, 24-2400K, 25-2500K 27-2700K, 30-3000K, 35-3500K 40-4000K, 50-5000K, 65-6500K	01 - Black&Red 22AWG	A - AMP male/female	E - Through Endcaps
			24 24VDC	7.68W/m	90+				
	B Black	O Opal	24 24VDC	5.04W/m	95	22-2200K, 25-2500K, 27-2700K 30-3000K, 35-3500K, 40-4000K 50-5000K, 65-6500K	02 - Black&White 22AWG	M - Molex male/female	B - Through profile end bottom
			36 36VDC	2.40W/m	95+				
	S Silver	C Clear	36 36VDC	5.76W/m	TW	Tunable White - check your executive sales	03 - White PU protected 2 pin	D - DC male/female	S - Through profile side
			48 48VDC	11.52W/m					
				24.00W/m	D2W	Dim To Warm - check your executive sales	04 - 3Pin cable for Tunable white		
				28.80W/m					
				5.18W/m					
				6.00W/m					
			21.60W/m						

RECOMMEND LIGHT SOURCE

Performance	Part Code	LED QTY	Input Vol.	Power	CRI	Light Source Lumen	Diffuser Lens Lumen	Cutttable Length	Max Run	PCB Width
General	FN-2835T-60	60pcs/m	12/24VDC	14.40 W/m	90+	1440 lm/m	1224 lm/m	12V=50mm 24V=100mm	12V=5m 24V=9m	10 mm
					95+	1238 lm/m	1052 lm/m			
High Efficiency	FN-H2835T-64	64pcs/m	24VDC	7.68 W/m	90+	1029 lm/m	875 lm/m	125mm	5m	10 mm
					95+	968 lm/m	823 lm/m			
	FN-H28350-80	80pcs/m	24VDC	14.40W/m	90+	2275 lm/m	1934 lm/m	100mm	4m	10 mm
Long Run	LN-2835T-60	60pcs/m	24VDC	5.04 W/m	90+	499 lm/m	424 lm/m	100mm	21m	10mm
					95+	413 lm/m	351 lm/m			
				2.4 W/m	90+	230 lm/m	196 lm/m	100mm	50mm	10 mm
					95+	190 lm/m	162 lm/m			
Short Cut	FN-F2835A-60	60pcs/m	24VDC	14.4 W/m	90+	1239 lm/m	1003 lm/m	33.3mm	5.5mm	10 mm
					95+	979lm/m	832 lm/m			

RECOMMEND LIGHT SOURCE

Performance	Part Code	LED QTY	Input Vol.	Power	CRI	Light Source Lumen	Diffuser Lens Lumen	Cutttable Length	Max Run	PCB Width
General	FN-H2835T-120	120pcs/m	12/24VDC	14.40 W/m	90+	1512 lm/m	1285 lm/m	12V=50mm 24V=50mm	12V=5m 24V=9m	10 mm
					95+	1282 lm/m	1090 lm/m			
High Efficiency	FN-H2835T-128	128pcs/m	12/24VDC	11.52 W/m	90+	1613 lm/m	1371 lm/m	12V=31.2mm 24V=62.5mm	12V=3m 24V=6m	10 mm
				95+	1475 lm/m	1254 lm/m				
	FN-H28350-160	160pcs/m	24VDC	24 W/m	90+	3480 lm/m	3284 lm/m	50mm	3m	10 mm
	FN-H2835T-160	160pcs/m	12/24VDC	14.40 W/m	90+	1987 lm/m	1689 lm/m	12V=25mm 24V=50mm	12V=3mm 24V=5mm	10 mm
			95+	1843 lm/m	1567 lm/m					
Long Run	LN-H2835T-80	80pcs/m	36VDC	5.18W/m	90+	580 lm/m	493 lm/m	100mm	50mm	10 mm
					95+	482 lm/m	410 lm/m			
	LN-H2835T-112	112pcs/m	48VDC	11.52 W/m	90+	1336 lm/m	1136 lm/m	125mm	25mm	10 mm
					95+	1106 lm/m	940 lm/m			
Short Cut	FN-F2835A-120	120pcs/m	24VDC	21.60 W/m	90+	1922 lm/m	1634 lm/m	16.7mm	3.5mm	10 mm
					95+	1595 lm/m	1356 lm/m			



OPTICAL SERIES

► SL2119F15



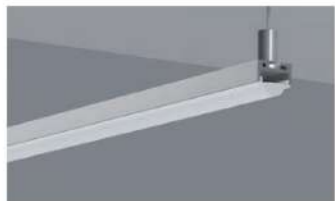
PROFILE COLORS



ACCESSORIES



Pendant Kit



Installation: Pendant
 Length Available: 1-3m
 Profile Color: Silver, Black Anodized, White Powder Coating
 Lens: Clear Optical Lens
 Input Cable: Endcaps, Profile Bottom, Profile Sides
 Quick Female/Male Connectors Input cable & Junction Box available

OPTICAL SERIES

► SL2119F15

ORDERING CODE

LUMINAIRE	FINISH	LENS	Vol.	Power	Ra	CRI	INSTALL ACCS.	IP GRADE	CONTROL OPTOINS
SL2119F15	W White	D Diffuser	12	14.40W/m	90	22-2200K, 24-2400K, 25-2500K	01 - Black&Red 22AWG	A - AMP male/female	E - Through Endcaps
			12VDC	7.68W/m					
	B Black	O Opal	24	5.04W/m	95	22-2200K, 25-2500K, 27-2700K	02 - Black&White 22AWG	M - Molex male/female	B - Through profile end bottom
			24VDC	2.40W/m					
	S Silver	C Clear	36	5.76W/m	95+	50-5000K, 65-6500K	03 - White PU protected 2 pin	D - DC male/female	S - Through profile side
			36VDC	2.40W/m					
			48	11.52W/m		TW	Tunable White - check your executive sales.		
			48	11.52W/m		D2W	Dim To Warm - check your executive sales.		
				24.00W/m				04 - 3Pin cable for Tunable white	
				28.80W/m					
			5.18W/m						
			6.00W/m						
			21.60W/m						

RECOMMEND LIGHT SOURCE

Performance	Part Code	LED QTY	Input Vol.	Power	CRI	Light Source Lumen	Diffuser Lens Lumen	Cuttable length	Max Run	PCB Width
General	FN-2835T-60	60pcs/m	12/24VDC	14.40 W/m	90+	1440 lm/m	1224 lm/m	12V=50mm 24V=100mm	12V=5m 24V=9m	10 mm
					95+	1238 lm/m	1052 lm/m			
High Efficiency	FN-H2835T-64	64pcs/m	24VDC	7.68 W/m	90+	1029 lm/m	875 lm/m	125mm	5m	10 mm
					95+	968 lm/m	823 lm/m			
	FN-H28350-80	80pcs/m	24VDC	14.40W/m	90+	2275 lm/m	1934 lm/m	100mm	4m	10 mm
Long Run	LN-2835T-60	60pcs/m	24VDC	5.04 W/m	90+	499 lm/m	424 lm/m	100mm	21m	10mm
					95+	413 lm/m	351 lm/m			
				2.4 W/m	90+	230 lm/m	196 lm/m	100mm	50mm	10 mm
					95+	190 lm/m	162 lm/m			
	LN-2835T-56	56pcs/m	48VDC	5.76 W/m	90+	668 lm/m	568 lm/m	250mm	35mm	10 mm
95+					553 lm/m	470 lm/m				
Short Cut	FN-F2835A-60	60pcs/m	24VDC	14.4 W/m	90+	1239 lm/m	1003 lm/m	33.3mm	5.5mm	10 mm
					95+	979lm/m	832 lm/m			

OPTICAL SERIES

► SL2119F15

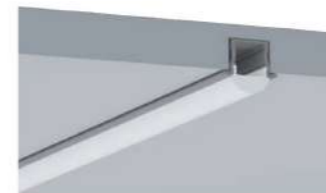
RECOMMEND LIGHT SOURCE

Performance	Part Code	LED QTY	Input Vol.	Power	CRI	Light Source Lumen	Diffuser Lens Lumen	Cutttable length	Max Run	PCB Width
General	FN-H2835T-120	120pcs/m	12/24VDC	14.40 W/m	90+	1512 lm/m	1285 lm/m	12V=50mm 24V=50mm	12V=5m 24V=9m	10 mm
					95+	1282 lm/m	1090 lm/m			
High Efficiency	FN-H2835T-128	128pcs/m	12/24VDC	11.52 W/m	90+	1613 lm/m	1371 lm/m	12V=31.2mm 24V=62.5mm	12V=3m 24V=6m	10 mm
					95+	1475 lm/m	1254 lm/m			
	FN-H2835O-160	160pcs/m	24VDC	24 W/m	90+	3480 lm/m	3284 lm/m	50mm	3m	10 mm
					95+	1987 lm/m	1689 lm/m	12V=25mm 24V=50mm	12V=3mm 24V=5mm	
FN-H2835T-160	160pcs/m	12/24VDC	14.40 W/m	90+	1987 lm/m	1689 lm/m	12V=25mm 24V=50mm	12V=3mm 24V=5mm	10 mm	
				95+	1843 lm/m	1567 lm/m				
FN-H2835O-192	192pcs/m	24VDC	28.8 W/m	90+	4176 lm/m	3941 lm/m	41.7mm	2.5m	10 mm	
Long Run	LN-H2835T-80	80pcs/m	36VDC	5.18W/m	90+	580 lm/m	493 lm/m	100mm	50mm	10 mm
					95+	482 lm/m	410 lm/m			
	LN-H2835T-112	112pcs/m	48VDC	11.52 W/m	90+	1336 lm/m	1136 lm/m	125mm	25mm	10 mm
					95+	1106 lm/m	940 lm/m			
	LN-H2835T-120	120pcs/m	24VDC	6.00 W/m	90+	588 lm/m	500 lm/m	50mm	21mm	10 mm
					95+	486 lm/m	413 lm/m			
Short Cut	FN-F2835A-120	120pcs/m	24VDC	21.60 W/m	90+	1922 lm/m	1634 lm/m	16.7mm	3.5mm	10 mm
					95+	1595 lm/m	1356 lm/m			



OPTICAL SERIES

► SL2525F12



Installation: Trimed Recessed
 Length Available: 1-3m
 Profile Color: Silver, Black Anodized, White Powder Coating
 Lens: Clear Optical Lens
 Input Cable: Endcaps, Profile Bottom, Profile Sides
 Quick Female/Male Connectors Input cable & Junction Box available

OPTICAL SERIES

► SL2515F12

ORDERING CODE

LUMINAIRE	FINISH	LENS	Vol.	Power	Ra	CRI	INSTALL ACCS.	IP GRADE	CONTROL OPTOINS
SL2515F12	W White	D Diffuser	12 12VDC	14.40W/m	90	22-2200K, 24-2400K, 25-2500K 27-2700K, 30-3000K, 35-3500K 40-4000K, 50-5000K, 65-6500K	01 - Black&Red 22AWG	A - AMP male/female	E - Through Endcaps
			24 24VDC	7.68W/m	90+				
	B Black	O Opal	24 24VDC	5.04W/m	95	22-2200K, 25-2500K, 27-2700K 30-3000K, 35-3500K, 40-4000K 50-5000K, 65-6500K	02 - Black&White 22AWG	M - Molex male/female	B - Through profile end bottom
			36 36VDC	2.40W/m	95+				
	S Silver	C Clear	36 36VDC	5.76W/m	TW	Tunable White - check your executive sales	03 - White PU protected 2 pin	D - DC male/female	S - Through profile side
			48 48VDC	11.52W/m					
				24.00W/m	D2W	Dim To Warm - check your executive sales	04 - 3Pin cable for Tunable white		
				28.80W/m					
				5.18W/m					
				6.00W/m					
			21.60W/m						

RECOMMEND LIGHT SOURCE

Performance	Part Code	LED QTY	Input Vol.	Power	CRI	Light Source Lumen	Diffuser Lens Lumen	Cutttable Length	Max Run	PCB Width
General	FN-2835T-60	60pcs/m	12/24VDC	14.40 W/m	90+	1440 lm/m	1224 lm/m	12V=50mm 24V=100mm	12V=5m 24V=9m	10 mm
					95+	1238 lm/m	1052 lm/m			
High Efficiency	FN-H2835T-64	64pcs/m	24VDC	7.68 W/m	90+	1029 lm/m	875 lm/m	125mm	5m	10 mm
					95+	968 lm/m	823 lm/m			
	FN-H28350-80	80pcs/m	24VDC	14.40W/m	90+	2275 lm/m	1934 lm/m	100mm	4m	10 mm
					95+	2275 lm/m	1934 lm/m			
Long Run	LN-2835T-60	60pcs/m	24VDC	5.04 W/m	90+	499 lm/m	424 lm/m	100mm	21m	10mm
					95+	413 lm/m	351 lm/m			
				2.4 W/m	90+	230 lm/m	196 lm/m	100mm	50mm	10 mm
					95+	190 lm/m	162 lm/m			
	LN-2835T-56	56pcs/m	48VDC	5.76 W/m	90+	668 lm/m	568 lm/m	250mm	35mm	10 mm
					95+	553 lm/m	470 lm/m			
Short Cut	FN-F2835A-60	60pcs/m	24VDC	14.4 W/m	90+	1239 lm/m	1003 lm/m	33.3mm	5.5mm	10 mm
					95+	979lm/m	832 lm/m			

OPTICAL SERIES

► SL2525F12

RECOMMEND LIGHT SOURCE

Performance	Part Code	LED QTY	Input Vol.	Power	CRI	Light Source Lumen	Diffuser Lens Lumen	Cutttable Length	Max Run	PCB Width
General	FN-H2835T-120	120pcs/m	12/24VDC	14.40 W/m	90+	1512 lm/m	1285 lm/m	12V=50mm 24V=50mm	12V=5m 24V=9m	10 mm
					95+	1282 lm/m	1090 lm/m			
High Efficiency	FN-H2835T-128	128pcs/m	12/24VDC	11.52 W/m	90+	1613 lm/m	1371 lm/m	12V=31.2mm 24V=62.5mm	12V=3m 24V=6m	10 mm
					95+	1475 lm/m	1254 lm/m			
	FN-H28350-160	160pcs/m	24VDC	24 W/m	90+	3480 lm/m	3284 lm/m	50mm	3m	10 mm
					95+	3480 lm/m	3284 lm/m			
Long Run	FN-H2835T-160	160pcs/m	12/24VDC	14.40 W/m	90+	1987 lm/m	1689 lm/m	12V=25mm 24V=50mm	12V=3mm 24V=5mm	10 mm
					95+	1843 lm/m	1567 lm/m			
	FN-H28350-192	192pcs/m	24VDC	28.8 W/m	90+	4176 lm/m	3941 lm/m	41.7mm	2.5m	10 mm
					95+	4176 lm/m	3941 lm/m			
Short Cut	LN-H2835T-80	80pcs/m	36VDC	5.18W/m	90+	580 lm/m	493 lm/m	100mm	50mm	10 mm
					95+	482 lm/m	410 lm/m			
	LN-H2835T-112	112pcs/m	48VDC	11.52 W/m	90+	1336 lm/m	1136 lm/m	125mm	25mm	10 mm
					95+	1106 lm/m	940 lm/m			
LN-H2835T-120	120pcs/m	24VDC	6.00 W/m	90+	588 lm/m	500 lm/m	50mm	21mm	10 mm	
				95+	486 lm/m	413 lm/m				
Short Cut	FN-F2835A-120	120pcs/m	24VDC	21.60 W/m	90+	1922 lm/m	1634 lm/m	16.7mm	3.5mm	10 mm
					95+	1595 lm/m	1356 lm/m			

